

## KSS 800 - AN EFFORTLESS ELEVATOR EXPERIENCE

The KSS 800 destination signalization family features a range of finish options, including anti-fingerprint stainless steel, and attractive signalization alternatives.

# KONE DESTINATION SIGNALIZATION

Unlike conventional elevator control systems, which only register the desired travel direction, our system takes into account desired destination floors and the number of waiting passengers to significantly improve efficiency and convenience.

We offer traditional and hybrid systems. With the traditional system elevators are called using destination operating panels in the lobby and there are no operating panels in the elevator car. The hybrid system includes destination operating panels in the lobby and normal operating panels in the elevator cars.



### CAR OPERATING PANEL (COP)



KSC 833

KSC 863

KSC 853

**Displays**  
Scrolling dot matrix

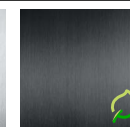
**LED color**  
White

**COP buttons**  
Hidden keypad, standard  
Hidden keypad, configurable  
Function buttons according to COP type

### FINISHES



**ST4AFP**  
Silver brushed stainless steel with anti-fingerprint coating



**CB**  
Carbon black brushed stainless steel with anti-fingerprint coating

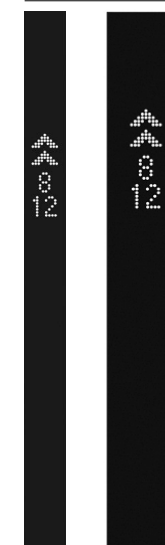


**MP1**  
Silver mirror-polished stainless steel



**MP9AFP**  
Copper satin stainless steel with anti-fingerprint coating

### JAMB-MOUNTED DESTINATION INDICATORS (JM DIN)



KSJ 853

KSJ 863

## TOUCHSCREEN DESTINATION OPERATING PANEL (DOP)



KSP 858  
with pedestal

**Faceplate finishings:**  
Glass with black back printing

**Finishing**  
Aluminum deep black anodized  
Aluminum light silver anodized

**Buttons**  
Only accessibility button on side,  
others on screen  
Symbol is tactile silver  
NA button white on black

**Displays:**  
Full graphic LCD

**User interace types**  
Keypad  
Grid  
List

**Fixing type**  
Semi-flush (KSP 888)  
Surface mounted (KSP 858)  
Pedestal (KSP 858)

**Access control**  
Reservation for ACS reader

## DESTINATION OPERATING PANEL (DOP)



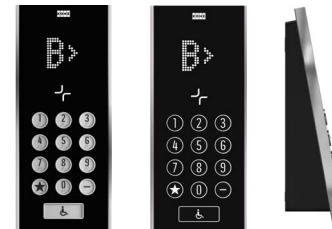
KSP 833

**DOP Buttons**  
Round, surface mounted,  
black with white marking

Australian version:  
stainless steel with black marking

**DOP button markings**  
Normal keypad  
Accessibility button  
No additional buttons

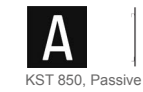
**DOP fixing type**  
DOP surface mounted



KSP 853 AUS

KSP 853

## ELEVATOR IDENTIFIERS (EID)



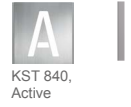
KST 850, Passive



KST 860, Active



KST 830,  
Passive



KST 840,  
Active



KST 880, Passive



KST 890, Active



KSP 888  
Semi-flush mounted  
(does not support EN81-70)



KSP 858  
Surface mounted



## DESTINATION GUIDANCE DISPLAY (DGD)

A display device used with KONE Turnstile 100 (KT100) in case of integration with KONE Destination Control System and KONE Access. It activates a direct home-floor call when a person passes through the turnstile.

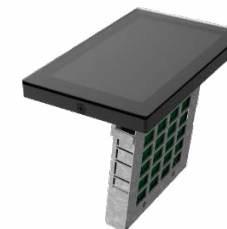


KSG 857  
DGD 3rd party module

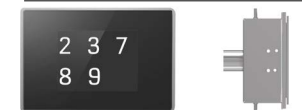
**Faceplate finishing**  
KT100 Top glass with  
black back printing

**Displays**  
Full graphic color LCD 7"

**Fixing type**  
Flush mounted to KT100 top rail



## DESTINATION INDICATOR AT LANDING (DIN L)



KSO 857